

Experiencing Problems?

- ◆ Has an individual that you provide support to experienced difficulty with a recent hospitalization?
- ◆ Have you had difficulty with coordination of a recent hospital discharge (i.e., lack of support with supplies and/or durable medical equipment, difficulty coordinating home-care services)?
- ◆ Did you experience problems with communication with the hospital staff?
- ◆ Do you feel a local hospital would benefit from education pertaining to supports and services for the I/DD population?
- ◆ Do you need training focused on effective communication to understand the unique needs of the I/DD population?



ABOUT PHILADELPHIA COORDINATED HEALTH CARE

The mission of Philadelphia Coordinated Health Care (PCHC) is to enhance access to community health care through education, public health outreach, advocacy, and empowerment as well as to improve outcomes for individuals with intellectual and developmental disabilities (I/DD) in the Southeastern Region of Pennsylvania.

Our Services

While PCHC does not provide direct care services, we offer a wide range of activities and programs to promote accessible and responsive community health care:

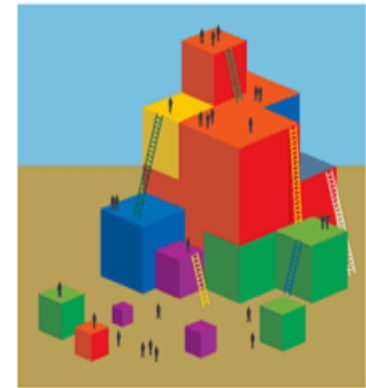
- Education and training on all health care topics;
- Support for teams addressing complex medical issues;
- Development of useful health care materials;
- Review of incident data to identify health care risk;
- Public health projects to raise awareness about health care and disability issues.

Funding provided by:

Philadelphia Department of Behavioral Health / Intellectual disAbility Services , the Bucks, Chester, Delaware and Montgomery County Offices of Intellectual/ Developmental Disabilities and the Office of Developmental Programs, Pennsylvania Department of Public Welfare



Community Hospital Outreach Project



Building better service through outreach

*Philadelphia
Coordinated
Health Care
Can Help*



(215) 546-0300

www.pchc.org

We can and should improve the hospital experience for those with Intellectual and Developmental Disabilities (I/DD)

PCHC can help!

The Community Hospital Outreach Project began in 2006 with the assistance of a student from Temple University's School of Public Health. The project has expanded to include physician practices and higher learning institutions.

We have learned that there are often uncertainties and concerns that many healthcare providers have around providing services to people with I/DD. This may create a barrier to optimal health outcomes for people with I/DD.

We frequently provide supports to individuals, families, support coordination units, administrative entities, provider agencies, clinicians and many others that support people with I/DD. This support can be in the form of educational sessions, team support, resource meetings, clinical reviews and much more.

PCHC can help to...

- ◆ Educate hospital staff on best practices for hospital admissions and safe discharges for the I/DD population
- ◆ Assist hospital staff in understanding general roles and responsibilities of the provider agency Nurse, Direct Support Professional staff and Support Coordination Units
- ◆ Provide hospital staff with insight into the Pennsylvania Office of Developmental Programs' *Procedures for Surrogate Health Care Decision Making*



If this is something you feel would be beneficial to those you support and team members, please contact PCHC. The staff at PCHC are waiting to assist your organization.

PCHC (215) 546-0300

www.PCHC.org

What PCHC can do ...

PCHC continues to enhance access to community health care through education, public health outreach, advocacy and empowerment; while focusing on improving health care outcomes for individuals with I/DD.

Educational presentations are developed with modules that can be customized to meet individual needs.

PCHC staff is available to make presentations to your organization throughout the Southeast Pennsylvania region at your request.

Additional Resources

Centers for Medicare and Medicaid
Your Discharge Planning Checklist
1(800)633-4227
TTY: 1(877)486-2048
<https://www.cms.gov/>

The American Academy of Developmental Medicine and Dentistry
AADMD
Hospital Care and I/DD
<https://www.aadmd.org>

Philadelphia Coordinated Health Care
Hospital Admission and Discharge Planning
Booklet 2008
<https://www.pchc.org>